

The SEND Consultation



The government had questions about education for young people with SEND.

Kids



Kids and The Collective thought you were the best people to ask.

434



434 Young people from across the country took part.

149



149 completed our survey.

285



285 completed activities, done either online or in person.



We fed back what young people told us.

Question 1: How can we involve children and families in making decisions about SEND support?

The main answer that young people gave us was...



This includes...

working with participation groups
and
funding them.



Question 2: How can we make sure that all children with SEND get the support they need?

Talk to young people about
what they need

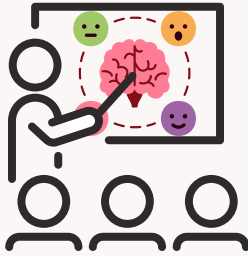


Talk to families/carers

Staff should be well trained



Question 3: How can we support children with their mental health at nursery, school and college?



Most young people felt learning about emotions and wellbeing should be part of education.

Nursery

Work together with parents/carers



Help children understand their bodies and their emotions, which are linked.

School

In schools they must notice issues early



Whole school ideas to look after wellbeing

Specialist support for people if needed



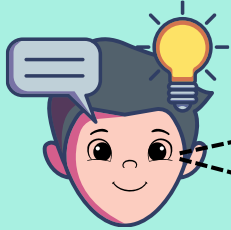
College

Teaching how to take care of mental health and wellbeing as an adult (including when and how to get more help).



Question 4: What help do you think children and families need before they start school?

Nurseries that include everyone



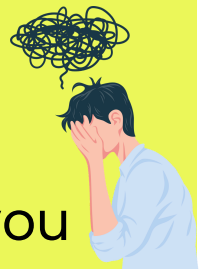
Easy to understand information

Someone to help bring things together and plan for moving on to school



Question 5: What are the most important things people need to know to support children and young people well?

Those supporting young people need the right information



- communication
- strengths
- challenges
- likes / dislikes
- your needs
- things that stress you
- ways to help you be calm
- things that help you learn



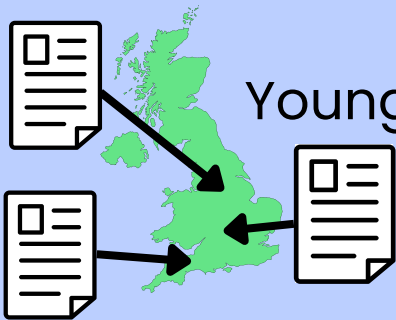
Repeating information to different people gets annoying

Support built around you



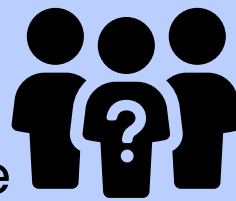
Question 6: How can we make sure that Individual Support Plans work well, and families are happy with them?

You told us that without the law behind plans, young people's rights could be broken!



Young people want the same documents to be used for all plans, instead of different ones in different places.

Plans must:

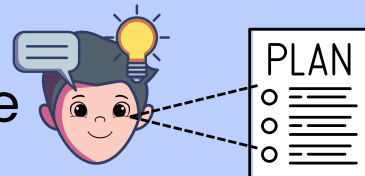


✓ involve the right people

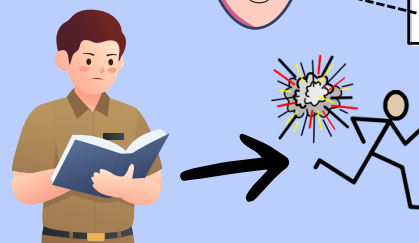
✓ be created by working together



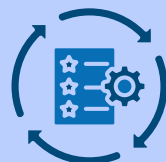
✓ be clear and understandable



✓ be read and actioned

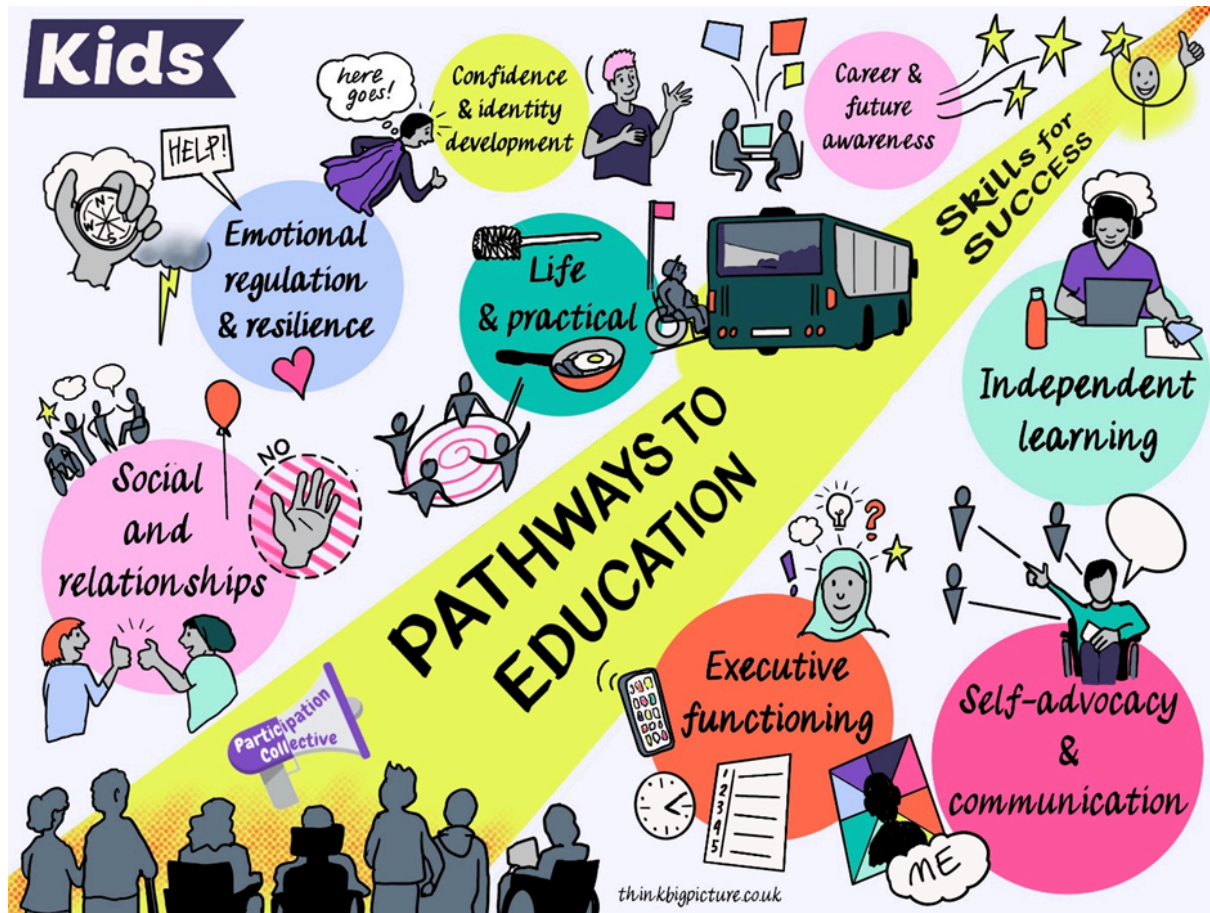


✓ be reviewed and updated regularly

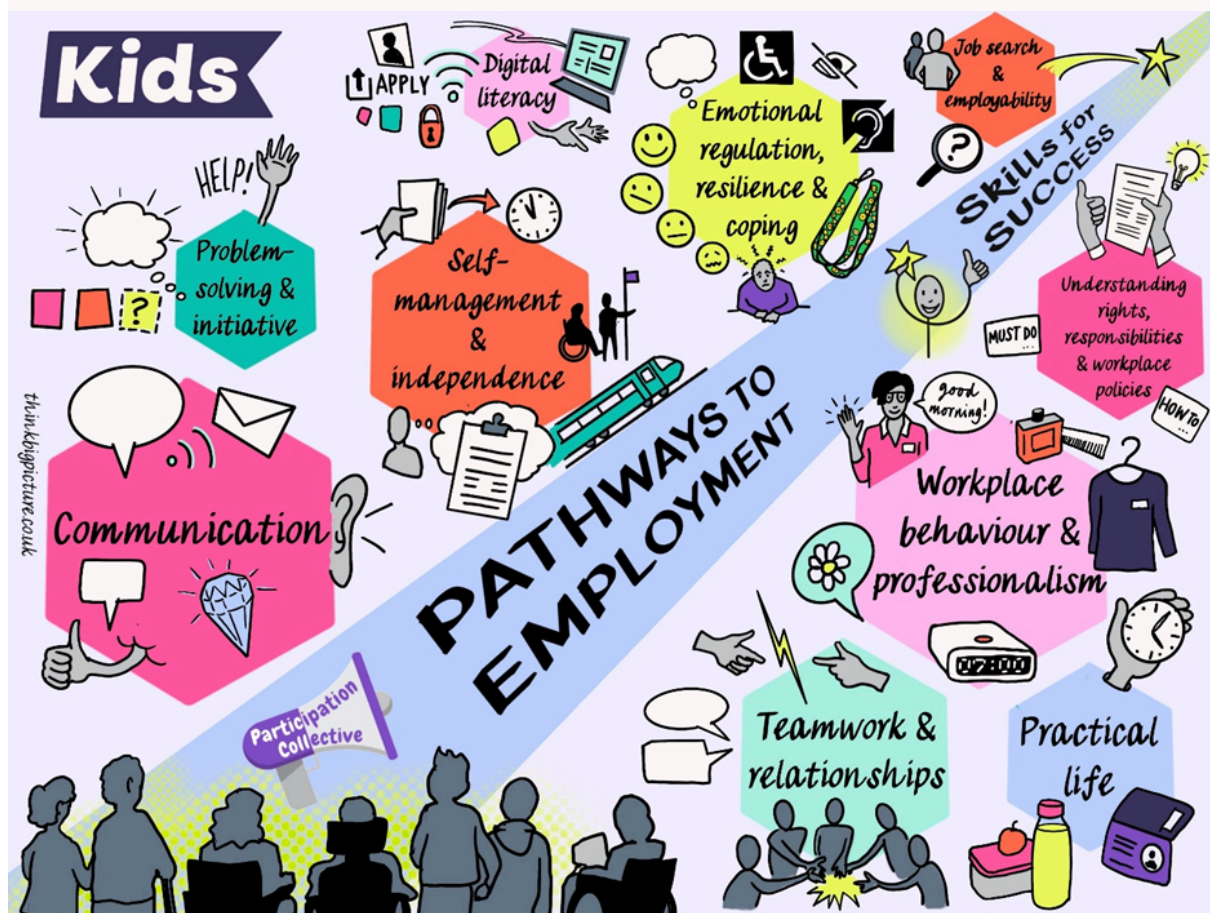


Someone must be responsible when support isn't happening.

Question 7: How can we help young people to leave school and start college work or university?



These pictures were made from your ideas.
Credit thinkbigpicture.co.uk



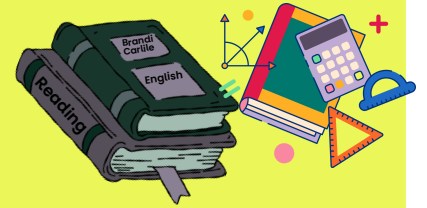
Question 8: How can we make sure that inclusion bases help children in mainstream schools?



Schools must make sure that young people with SEND aren't left out or shut away



Work together to make sure they give the right equipment support subjects



Transitions in and out must be well planned and supported.

Question 9: How can we make sure that children with complex needs get the right support?

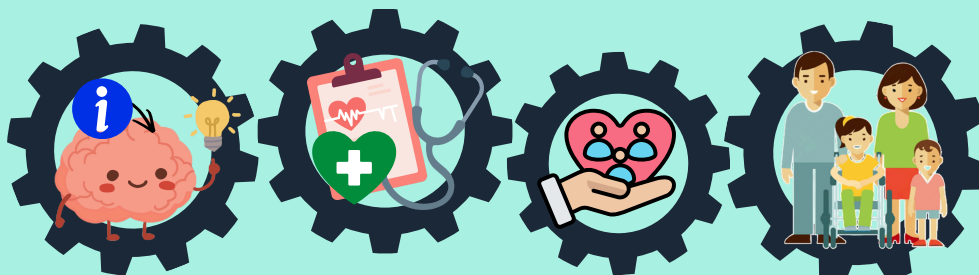
Provide special school places when needed



Skilled teachers in every classroom



Have access to specialists



Education, health, and social care must work together with young people and families

Question 10: How can we help children and families to choose which school is best for the child?

i Young people want information about

support



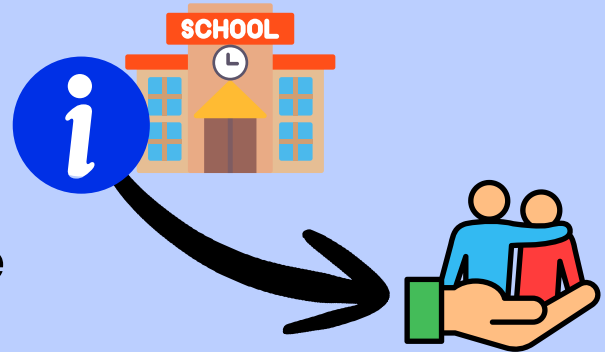
safety



school environment



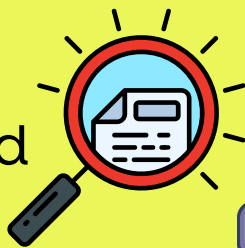
It is important that schools and colleges have the information they need to ensure any support can be in place before starting.



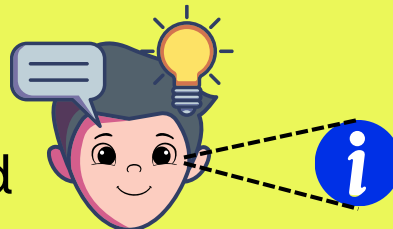
Question 11: What information and help to children and families need about send support?

i Information needs to be:

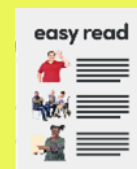
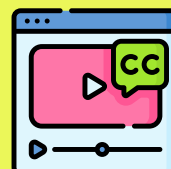
- easier to find



- easier to understand



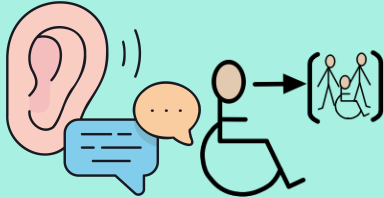
- more accessible



Question 12: Is there anything else you want to tell us?



Young people's comments tell us they want:



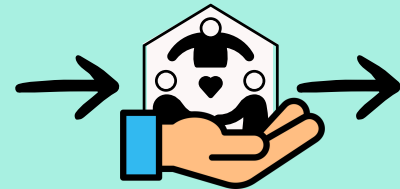
to be listened to and involved



to feel safe and supported



most suitable and specialist support



support with transitions

Kids would like to thank



all young people who took part

and

the support staff who helped ensure voices were heard.

